

Bicycle Coalition of Greater Philadelphia Fact Sheet: Bicycle Parking Racks

The “best practice” for bike racks is to allow a bike’s frame and wheel to be locked with a U-lock.¹ The most cost-efficient racks that meet such criteria are either inverted U racks or post and ring racks. “Wave” and the old-fashion “school” racks are NOT recommended. The last page of this document is from guidance prepared by the Association of Bicycle/Pedestrian Professionals illustrating which type of racks are (and are not) recommended. BikeParking.com has great advice on bike parking dos and don’ts. [Bike Parking 101](http://www.bikeparking.com/bikepark101/index.html) (<http://www.bikeparking.com/bikepark101/index.html>)

The following list of bike rack companies is not an endorsement by the Bicycle Coalition, but simply a short list of companies with bike rack products)

A. Inverted U racks Price range: \$99-\$250/rack



1. Dero www.dero.com
2. Saris www.saris.com
3. BikeParking.com www.bikeparking.com
4. Creative Pipe www.creativepipe.com
5. CreativeMetalWorks www.creativemetalworksllc.com

¹ Association of Bike/Ped Professionals: [Guidance document](#)

B. "Ganged" or multiple U racks Price range: \$265-\$416/set of 4 racks



1. Dero www.dero.com
2. Saris www.saris.com
3. BikeParking.com www.bikeparking.com
4. Madrax www.madrax.com
5. Creative Pipe www.creativepipe.com

C. Post and Rings (post and loop) racks Price range: \$136-\$250



1. www.dero.com Post & ring (\$136)
2. www.creativemetalworksllc.com

Welded bike circle (\$239)



Swizzle Stick (\$249)





3. www.bikeracks.ca

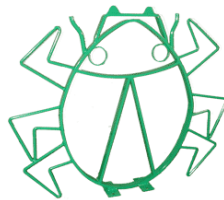
Post and ring (\$250)



4. www.bikeparking.com

Bike bollard (\$175-205)

D. Custom Racks available from



[Dero](#)



[Creative metal Works](#)



(Bicycle Barn on Frankford Av.)

[Leo Razzi](#) (Philadelphia industrial artist)
[Creative Pipe](#) (pictures not available)

1. THE RACK ELEMENT

Definition: the rack element is the part of the bike rack that supports one bicycle.

The rack element should:

- Support the bicycle upright by its frame in two places
- Prevent the wheel of the bicycle from tipping over
- Enable the frame and one or both wheels to be secured
- Support bicycles without a diamond-shaped frame with a horizontal top tube (e.g. a mixte frame)
- Allow front-in parking: a U-lock should be able to lock the front wheel and the down tube of an upright bicycle
- Allow back-in parking: a U-lock should be able to lock the rear wheel and seat tube of the bicycle



Comb, toast, school-yard, and other wheel-bending racks that provide no support for the bicycle frame are NOT recommended.

The rack element should resist being cut or detached using common hand tools, especially those that can be concealed in a backpack. Such tools include bolt cutters, pipe cutters, wrenches, and pry bars.



INVERTED "U"

One rack element supports two bikes.



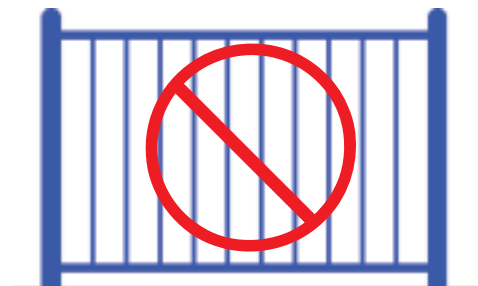
"A"

One rack element supports two bikes.



POST AND LOOP

One rack element supports two bikes.

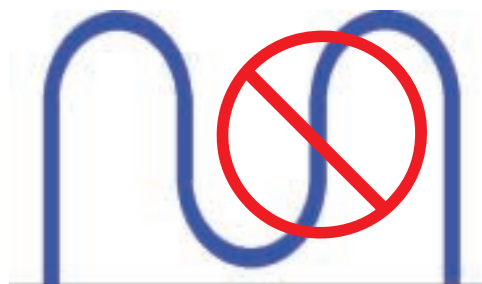


COMB

One rack element is a vertical segment of the rack.

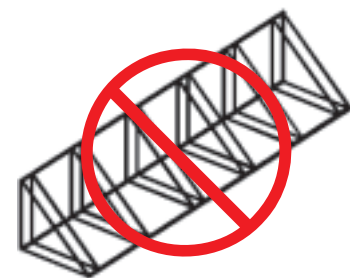


Not recommended



WAVE

One rack element is a vertical segment of the rack. (see additional discussion on page 3)



TOAST

One rack element holds one wheel of a bike.