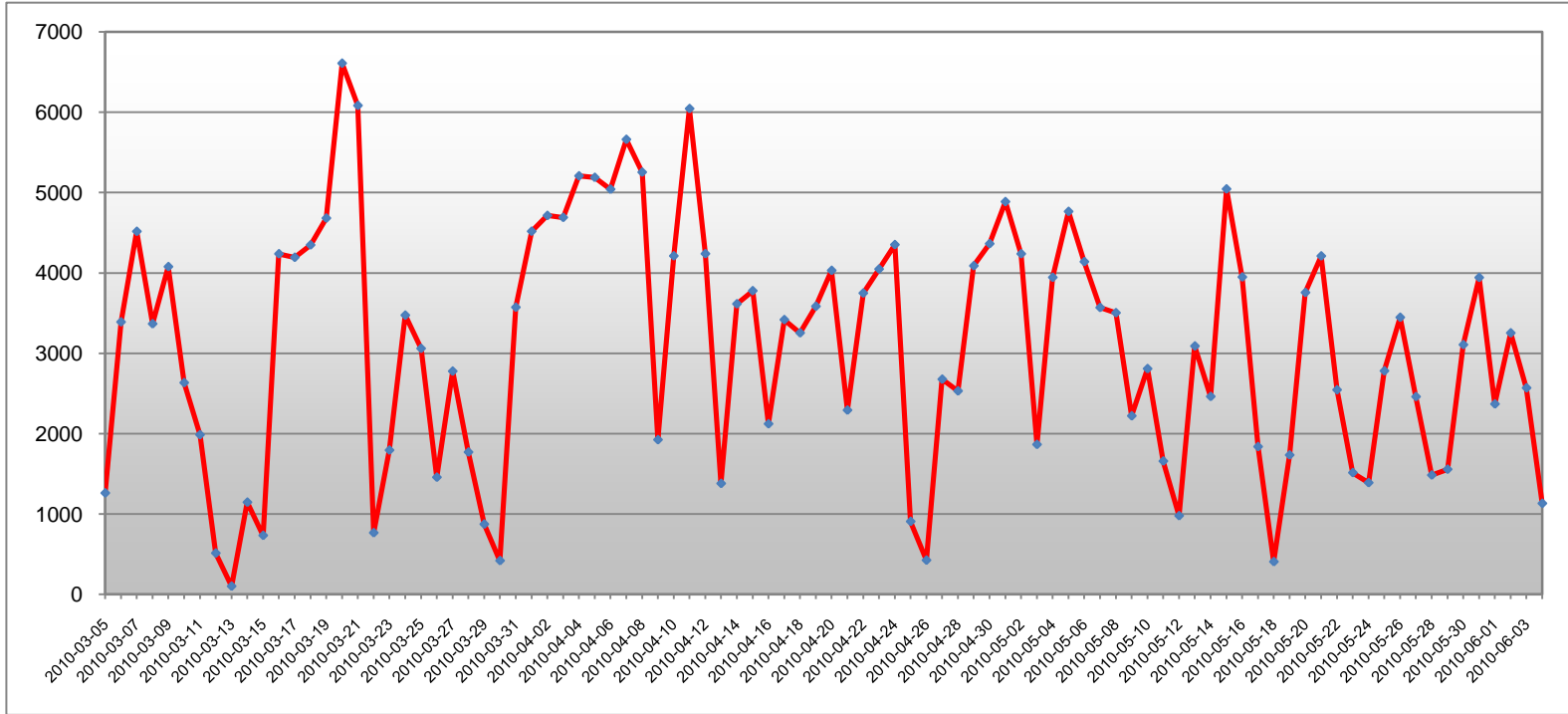


TRAFx REPORT:

Project: Start: 2010-03-05 Location:
 Counter: Schuylkill Banks 100604-133148 Finish: 2010-06-04 Comment:

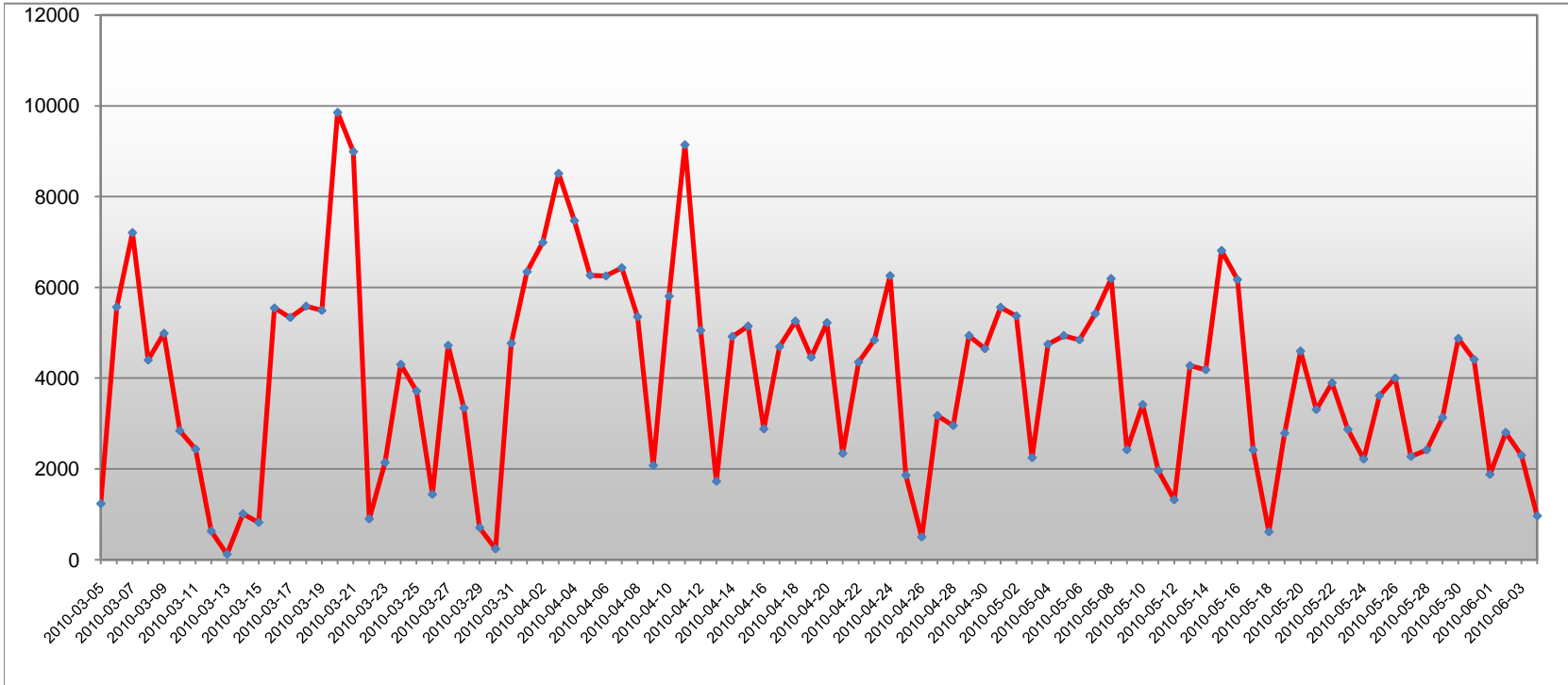


Total Counts:	283687	Daily Mean Weekday:	2919.2	Total (1) :	283687
Total Periods:	92	Daily Mean Weekend:	3500.8	Total (2) :	0
Period Length:	1 day	Mean Monday	2385.2	Percentage (1) :	100.0
Mean:	3083.6	Mean Tuesday	2677.3	Percentage (2) :	0.0
Mode:	4237.0	Mean Wednesday	3241.5	Mean (1) :	3083.6
Median:	3309.5	Mean Thursday	3598.8	Mean (2) :	0.0
Standard Deviation:	1502.9	Mean Friday	2709.3	Max/Min (1) :	6609 / 100
Maximum:	6609	Mean Saturday	3621.2	Max/Min (2) :	0 / 0
Minimum:	100	Mean Sunday	3380.5		
Total Weekday:	192665				
Total Weekend:	91022				
Daily Max/Min Weekday:	5661 / 405				
Daily Max/Min Weekend:	6609 / 100				

FIVE PEAK PERIODS: 2010-03-20 (6609), 2010-03-21 (6083), 2010-04-11 (6044), 2010-04-07 (5661), 2010-04-08 (5253)

TRAFx REPORT:

Project: Start: 2010-03-05 Location:
 Counter: Boathouse Row 100604-121355 Finish: 2010-06-04 Comment:

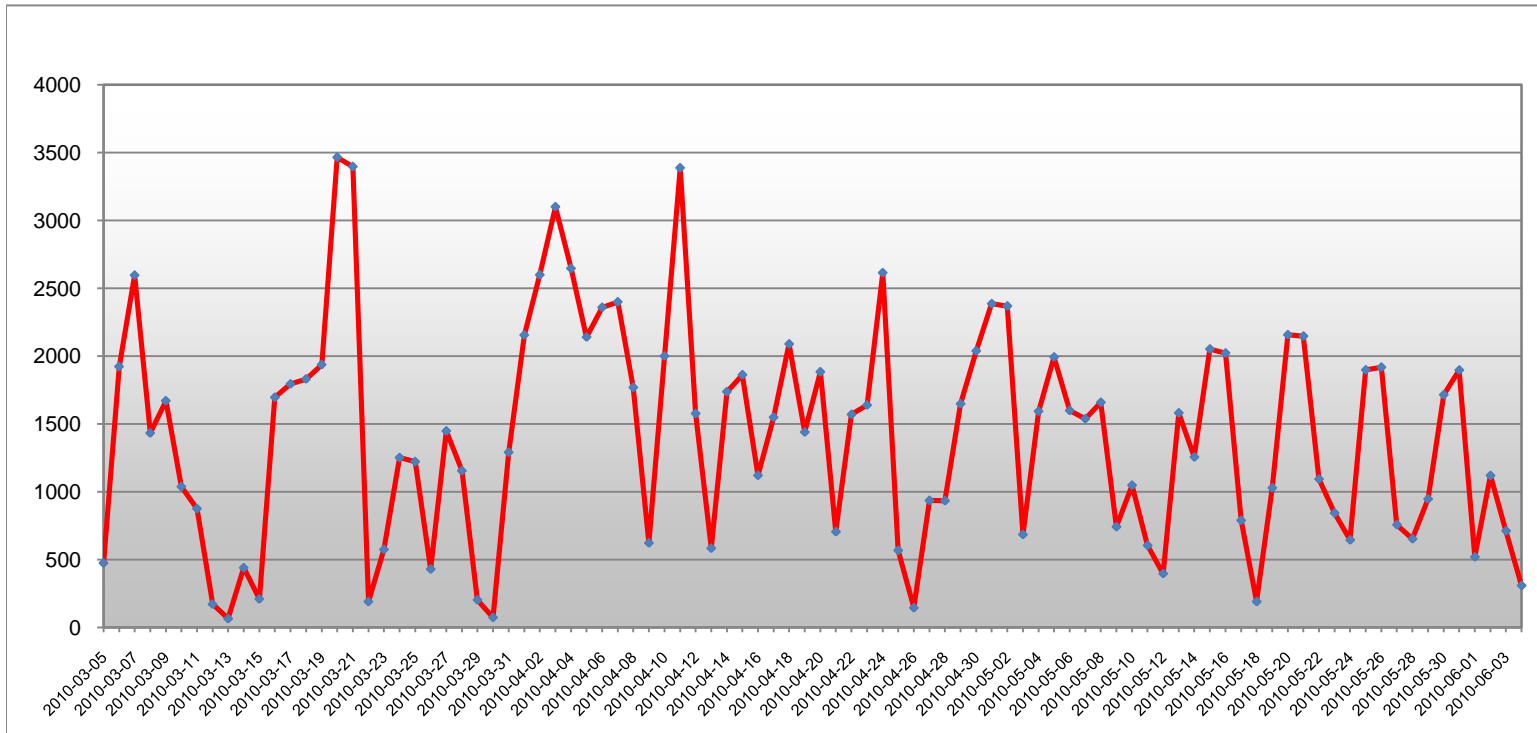


Total Counts:	369394	Daily Mean Weekday:	3519.6	Total (1) :	369394
Total Periods:	92	Daily Mean Weekend:	5273.2	Total (2) :	0
Period Length:	1 day	Mean Monday	2907.8	Percentage (1) :	100.0
Mean:	4015.2	Mean Tuesday	3237.5	Percentage (2) :	0.0
Mode:	4937.0	Mean Wednesday	3825.7	Mean (1) :	4015.2
Median:	4327.0	Mean Thursday	4319.4	Mean (2) :	0.0
Standard Deviation:	2135.5	Mean Friday	3322.6	Max/Min (1) :	9856 / 119
Maximum:	9856	Mean Saturday	5470.8	Max/Min (2) :	0 / 0
Minimum:	119	Mean Sunday	5075.5		
Total Weekday:	232291				
Total Weekend:	137103				
Daily Max/Min Weekday:	6991 / 236				
Daily Max/Min Weekend:	9856 / 119				

FIVE PEAK PERIODS: 2010-03-20 (9856), 2010-04-11 (9143), 2010-03-21 (8993), 2010-04-03 (8510), 2010-04-04 (7471)

TRAFx REPORT:

Project: Start: 2010-03-05 Location:
 Counter: East Falls 010101-010119 Finish: 2010-06-04 Comment:



Total Counts:	129450	Daily Mean Weekday:	1230.4	Total (1) :	129450
Total Periods:	92	Daily Mean Weekend:	1855.5	Total (2) :	0
Period Length:	1 day	Mean Monday	953.1	Percentage (1) :	100.0
Mean:	1407.1	Mean Tuesday	1120.9	Percentage (2) :	0.0
Mode:	190.0	Mean Wednesday	1353.5	Mean (1) :	1407.1
Median:	1492.0	Mean Thursday	1517.4	Mean (2) :	0.0
Standard Deviation:	809.7	Mean Friday	1208.8	Max/Min (1) :	3464 / 64
Maximum:	3464	Mean Saturday	1868.4	Max/Min (2) :	0 / 0
Minimum:	64	Mean Sunday	1842.7		
Total Weekday:	81206				
Total Weekend:	48244				
Daily Max/Min Weekday:	2598 / 73				
Daily Max/Min Weekend:	3464 / 64				

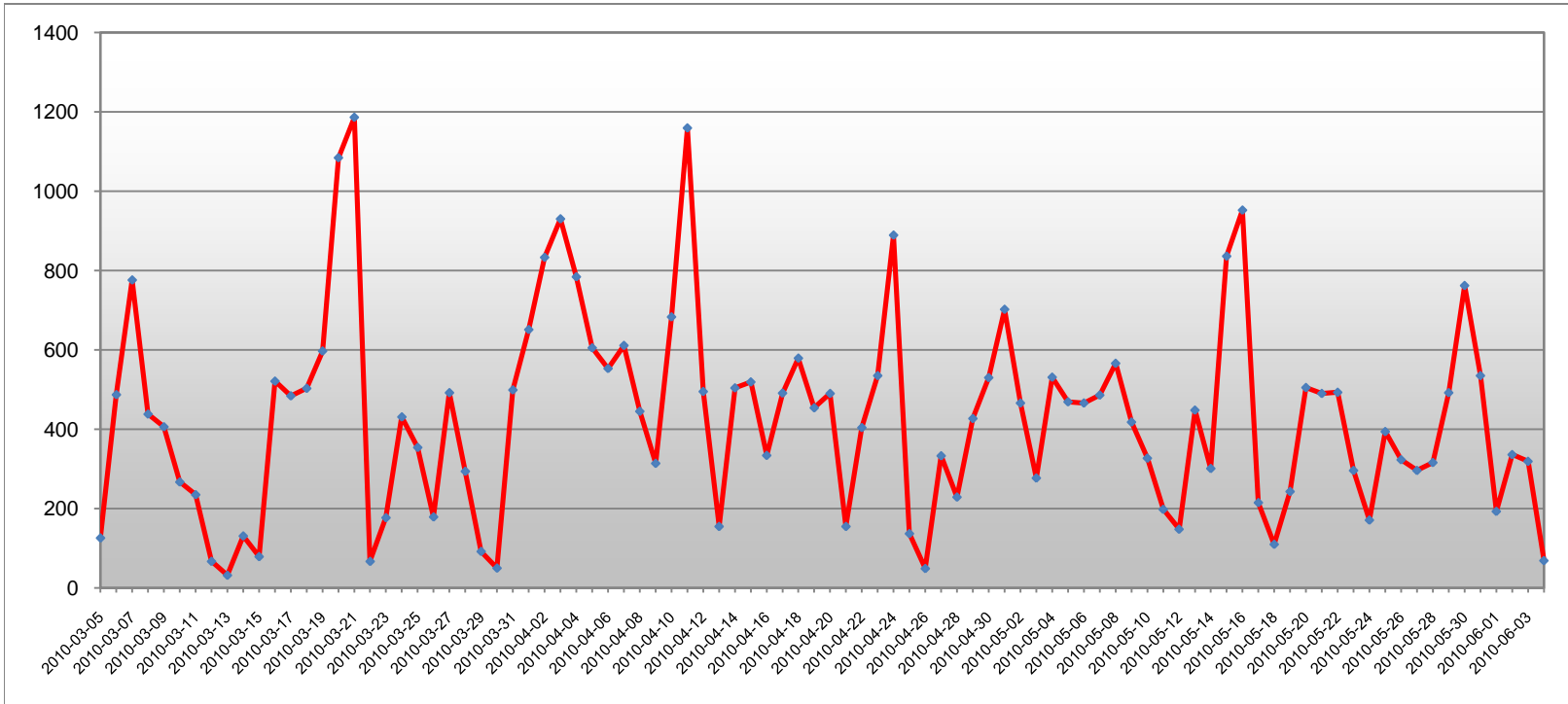
FIVE PEAK PERIODS: 2010-03-20 (3464), 2010-03-21 (3395), 2010-04-11 (3386), 2010-04-03 (3099), 2010-04-04 (2645)

TRAFx REPORT:

Project:
Counter: Manayunk 100604-112047

Start: 2010-03-05
Finish: 2010-06-04

Location:
Comment:



Total Counts:	39480	Daily Mean Weekday:	354.0	Total (1) :	39480
Total Periods:	92	Daily Mean Weekend:	619.9	Total (2) :	0
Period Length:	1 day	Mean Monday	292.6	Percentage (1) :	100.0
Mean:	429.1	Mean Tuesday	316.2	Percentage (2) :	0.0
Mode:	67.0	Mean Wednesday	361.5	Mean (1) :	429.1
Median:	441.5	Mean Thursday	428.6	Mean (2) :	0.0
Standard Deviation:	251.7	Mean Friday	369.8	Max/Min (1) :	1186 / 32
Maximum:	1186	Mean Saturday	629.0	Max/Min (2) :	0 / 0
Minimum:	32	Mean Sunday	610.8		
Total Weekday:	23363				
Total Weekend:	16117				
Daily Max/Min Weekday:	833 / 49				
Daily Max/Min Weekend:	1186 / 32				

FIVE PEAK PERIODS: 2010-03-21 (1186), 2010-04-11 (1159), 2010-03-20 (1084), 2010-05-16 (952), 2010-04-03 (930)